

Are YOU Ready?

Test your Preparedness level below!

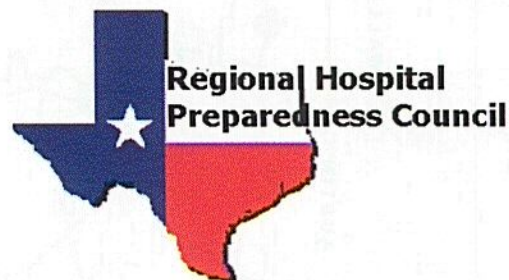
- | | | | |
|--|-----------------------------|--------------------------------|------------------------------------|
| 1. My home is located OUTSIDE of an evacuation zone.
(See map on page 2 for zip codes in evacuation zones) | <input type="radio"/> AGREE | <input type="radio"/> DISAGREE | <input type="radio"/> I DON'T KNOW |
| 2. Do you or anyone in your home have any of the following healthcare needs?
a. Home oxygen or Nebulizer treatments
b. Ventilator or C-Pap
c. Hemodialysis
d. Diabetes (taking insulin)
e. Bed confined or wheelchair bound | <input type="radio"/> NO | <input type="radio"/> YES | <input type="radio"/> I DON'T KNOW |
| 3. If yes to any of the above, do you plan to evacuate before the mandatory order is given? | <input type="radio"/> YES | <input type="radio"/> NO | <input type="radio"/> I DON'T KNOW |
| 4. If you take prescription medication, do you have a 7 day supply on hand at all times? | <input type="radio"/> YES | <input type="radio"/> NO | <input type="radio"/> I DON'T KNOW |
| 5. Do you have transportation AND a safe destination if you need to evacuate? | <input type="radio"/> YES | <input type="radio"/> NO | <input type="radio"/> I DON'T KNOW |
| 6. If my home loses power after a hurricane, I would NOT call 911 or go to my nearest hospital. | <input type="radio"/> AGREE | <input type="radio"/> DISAGREE | <input type="radio"/> I DON'T KNOW |
| 7. Do you know who to contact for help evacuating or for your healthcare needs? | <input type="radio"/> YES | <input type="radio"/> NO | <input type="radio"/> I DON'T KNOW |

If any of your answers fell in the **RED** hurricane symbol, you are NOT PREPARED!
Please register your information with 2-1-1 and begin making a PLAN!

Listed on the reverse side of this pamphlet are organizations that would like to assist you with evacuation needs, healthcare needs, questions about planning for hurricanes, and other resource needs during hurricane season

Brought to you by the

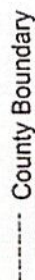
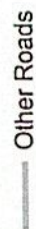
Regional Hospital Preparedness Council



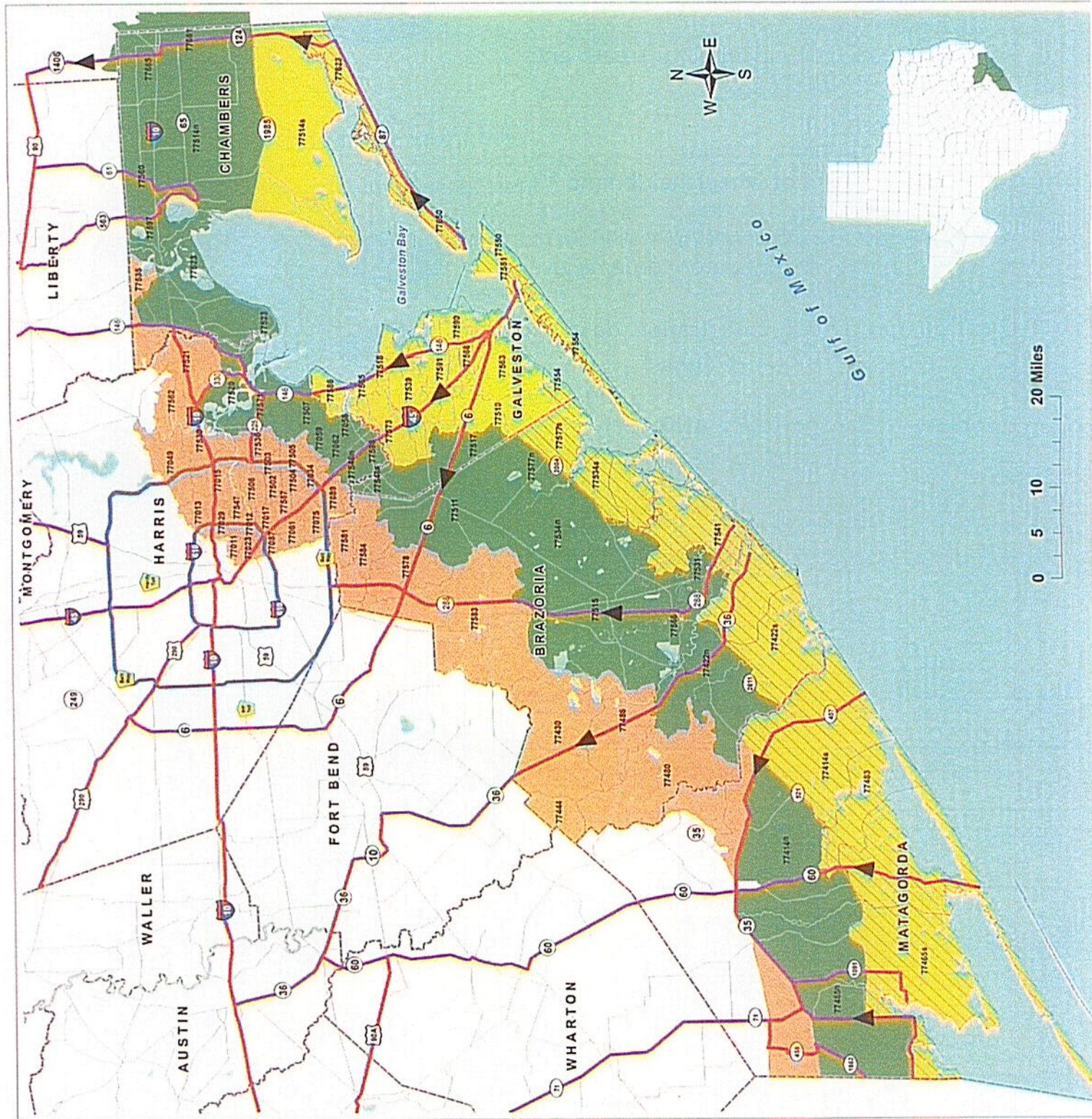
**Brazoria, Chambers,
Galveston, Harris and
Matagorda
Hurricane Evacuation
Zip-Zones
Coastal, A, B, C**

Zip- Zone Coastal		
77414s	77483	77550
77422s	77534	77577s
77442s	77534s	77571
77465s	77541	77554
		77623
Zip- Zone A		
77510	77539	77568
77514s	77563	77573
77518	77565	77591
		77586
Zip- Zone B		
77058	77507	77522
77059	77511	77523
77052	77514n	77531
77414n	77515	77534n
77422n	77517	77546n
77465n	77520	77546s
		77598
Zip- Zone C		
77011	77034	77444
77012	77049	77463
77013	77061	77480
77015	77075	77486
77017	77087	77502
77023	77089	77530
77029	77430	77503
		77535
		77536
		77561
		77562
		77578
		77581
		77583
		77584
		77587

Route Designation



Expiration Date December 2009
Map Created by:



IF YOU HAVE YOUR OWN TRANSPORTATION

EVACUATION PLANS

IF YOU THINK YOU NEED TO EVACUATE, LEAVE AS EARLY AS POSSIBLE.

HOW DO I KNOW WHEN TO EVACUATE?

Mandatory evacuation orders will come from your local officials. Evacuations will be based on zip codes. Please be prepared to leave immediately.

SHOULD I EVACUATE?

Local officials will make mandatory evacuation decisions before a storm makes landfall. Hurricanes are extremely unpredictable and can become much more dangerous in a matter of hours. It is **NOT** safe to wait. **Plan to LEAVE EARLY.**

WHERE SHOULD I GO?

You may evacuate to any city you choose. Contact your local county Office of Emergency Management (see back cover for phone numbers) if you are unsure where to evacuate to. If you do not have hotel reservations or family you can stay with, you may evacuate to the public shelters. **Public shelters cannot provide nursing care, assist with medications, or provide adequate care for the medically fragile.**

WHAT ROUTE SHOULD I TAKE?

There are no mandatory routes you must take when evacuating from your city. In fact there are several different routes you may take. When weather is good, take your family on an outing to check routes and become familiar with roadways.

The State has designated evacuation routes: SH-36, SH-288, SH-6, I-45, SH-290, HWY-59. If you choose to take an alternate route, essential services such as food, fuel, etc. are not guaranteed.

Please understand that depending on the strength of the storm. Contra-flow lanes might be open on SH-45, I-10, and SH-290 thirty-six (36) hours prior to the arrival of gale force winds. Plan your evacuation routes carefully, **(having more than one route planned)** realizing that contra-flow lanes have priority over all other routes.

WHEN EVACUATING YOU SHOULD:

- Coordinate your departure with the people who will be traveling with you. Notify an out-of-area person of your evacuation plans.
- Make arrangements for your pets.
- Pack your disaster supplies kit into your vehicle.
- Secure your home.
- Double check your evacuation route and leave.

I DON'T WANT TO EVACUATE!

Should you choose to stay, please remember that 2-1-1 registration for assistance will be CLOSED and UNAVAILABLE when the hurricane is 24 hours out from hitting the coast line. There will be NO SERVICES available to you (sewer, water, etc.). Hospitals will close, ambulances will not run, and police and fire cannot respond until the storm passes.

WHEN SHOULD I RETURN?

- Just because you hear from a friend or neighbor that their house is OK, does not mean it is safe for you to return.
- Local emergency managers will utilize: (1) local media (2) Connect CTY, and (3) websites to notify residents when it's safe to return. If you do not have access to any of the above resources, contact your city's emergency management coordinator's office before returning.
- Do not venture onto roads until you have been advised that they are passable and safe.

IT IS NOT SAFE TO WAIT!

FAMILY DISASTER CHECKLIST

ESSENTIALS:

- ☐ This booklet
- ☐ Battery-operated radio
- ☐ Flashlight
- ☐ Extra Batteries
- ☐ First Aid Kit (one for your home and one for each car)

****Do not include candles. Candles cause more fires after a disaster than anything else.**

WATER:

- ☐ 3 gallons per person, minimum, in a food-grade, plastic container
- ☐ Additional water for sanitation

FOOD:

- ☐ Minimum 3-day supply of non-perishable food that requires no refrigeration or preparation and little or no water
- ☐ Dry cereal
- ☐ Peanut butter
- ☐ Canned fruits
- ☐ Canned vegetables
- ☐ Canned juice
- ☐ Canned fruits
- ☐ Ready-to-eat canned meats
- ☐ Ready-to-eat soups (not concentrated)
- ☐ Quick energy snacks, graham crackers

SANITATION:

- ☐ Disinfectant
- ☐ Household chlorine bleach
- ☐ Soap, liquid detergent
- ☐ Toilet paper, towelettes, paper towels
- ☐ Personal hygiene items
- ☐ Canned fruits

CLOTHING & BEDDING:

- ☐ Plastic garbage bags, ties
- ☐ Sunglasses
- ☐ Raingear
- ☐ Sturdy shoes or work boots
- ☐ Blankets or sleeping bags
- ☐ Complete change of clothing and footwear per person

TOOLS AND SUPPLIES:

- ☐ Whistle
- ☐ Aluminum foil
- ☐ Crowbar
- ☐ Compass

- ☐ Paper, pencil
- ☐ Plastic sheeting
- ☐ Medicine dropper
- ☐ Needles, thread
- ☐ Signal flare
- ☐ Matches in a waterproof container
- ☐ Assorted nails, wood screws
- ☐ Pliers, screwdriver, hammer
- ☐ Plastic storage containers
- ☐ Heavy cotton or hemp rope
- ☐ Cash, traveler's checks, change
- ☐ Map of the area
- ☐ Non-electric can opener, utility knife
- ☐ Cell phone with charger
- ☐ Mess kits, or paper cups, plates and plastic utensils
- ☐ Tape, duct tape and plumber's tape or strap iron
- ☐ Patch kit and can of seal-in-air for tires
- ☐ Shut off wrench, to turn off household gas & water

FOR BABY:

- ☐ Formula
- ☐ Diapers
- ☐ Bottles
- ☐ Medication
- ☐ Powdered milk
- ☐ Baby food
- ☐ Cash, traveler's checks, change

FOR PETS:

- ☐ Food, water
- ☐ Non-tippable food and water containers
- ☐ Leash, harness or carrier
- ☐ Records of vaccinations
- ☐ Pet medications

IMPORTANT DOCUMENTS:

- ☐ Important telephone numbers
- ☐ Record of bank account numbers
- ☐ Family records (birth, marriage, death certificates)
- ☐ Inventory of household valuables
- ☐ Copy of will, insurance policies, contracts, deeds, stock and bonds
- ☐ Records of credit card account numbers and companies

- ☐ Copy of passport, social security cards, and immunization records

FAMILY MEDICAL NEEDS:

- ☐ Insulin
- ☐ Prescription drugs-10 day supply
- ☐ Heart and high blood pressure needs
- ☐ Denture needs
- ☐ Extra eye glasses
- ☐ Contact lenses and supplies

ENTERTAINMENT:

- ☐ Games and books

YOU MAY WANT TO INCLUDE:

Family photos, jewelry and select irreplaceable personal items

Keep a small bag packed including a minimum of these items:

- Personal sized bottled water (one for each family member – don't forget your pets)
- Dry snacks
- One complete change of clothing & footwear per person
- Cash, traveler's checks and/or credit cards, enough for food, gas & lodging
- Important documents
- Medications with original prescription containers
- Maps (evacuation routes and shelters)
- For baby: formula, diapers, bottles, medication & powdered milk
- For pets: food, leash, harness, carrier, non-tippable food & water containers
- Travel games or books for kids

MAKE SURE YOU HAVE YOUR VEHICLES' OIL AND FUEL LEVELS CHECKED REGULARLY DURING HURRICANE SEASON

RESERVE YOUR *RIDE TO SAFETY* IN ADVANCE **CALL 2-1-1**

Alternate number to call if out of service area: (713)957-4357 or register on-line at www.211us.org

If you live in a hurricane evacuation zone and you will need assistance to get out before the storm, dial 2-1-1 to register in advance for a ride.

Dial 2-1-1:



If you have a disability or special health care need and require assistance to get out.



If you cannot drive and cannot arrange transportation.



If you do not have a vehicle and you have no one else to help you evacuate.



If you want to register and you need to check if you live in an evacuation zone.



SAVE YOUR LIFE. DIAL 2-1-1 TO REGISTER IN ADVANCE FOR A RIDE

WHEN HURRICANES ARE ON THE WAY, DON'T STAY!

Helpful Telephone Numbers

City of Houston Office of Emergency Management	713-247-1000
	713-884-4500
Non-Emergency Assistance	311
Information Referral	211
Telecommunication Device for the Deaf (TDD)	713-884-4518
Harris County Office of Emergency Management	713-881-3100
Galveston County Office of Emergency Management	281-309-5002
Brazoria County Office of Emergency Management	979-864-1064
Chambers County Office of Emergency Management	409-267-8343
Matagorda County Office of Emergency Management	979-244-5318
Metropolitan Transit Authority	713-739-4000
Metro Lift	713-225-0119
Local Road Conditions and Closures	713-802-5074
American Red Cross	713-526-8300
United Way	713-685-2300
Salvation Army	713-752-0677
National Weather Service	281-337-5074

Helpful Websites

Together Against the Weather	<u>www.h-gac.com/taq/hurricane</u>
211 Registry	<u>www.211us.org</u>
The Governors Division of Emergency Management	<u>www.txdps.state.us/dem</u>
Department of Homeland Security	<u>www.ready.gov/america/index.html</u>
FEMA	<u>www.fema.gov/</u>
Children with Special Healthcare Needs	<u>www.dshs.state.tx.us/cshcn/default.shtm</u>